



## Commercial grade displays

7", 10.1" & 11.6"

### Commercial grade displays & monitors designed for public display

- Robust & tamper proof
- Exceptional reliability
- Battery power options
- Interactive options
- Framed & open frame



10.1" higher  
definition & 11.6"  
HD open frame  
displays

7" Open Frame displayer  
Available in standard &  
higher definition  
Available with trailing PIR &  
button modules



7" framed  
displayer  
With  
battery  
power

| OPEN FRAME | OPEN FRAME  | OPEN FRAME  |
|------------|-------------|-------------|
|            |             |             |
| 7" RANGE   | 10.1" RANGE | 11.6" RANGE |
|            |             |             |
| FRAMED     | FRAMED      | FRAMED      |

#### OVERVIEW

Comprehensive range of framed and open frame commercial grade displays and monitors. Available with buttons and PIR. Battery power option for 7" & 10". All our displays have proven exceptional levels of reliability.

See also our Touchscreen range.

#### MARKETS

Thousands of AD Series displays are deployed all over the world In Retail, Kiosk, Vending, Education, Commercial and Industrial environments.

#### KEY FEATURES

- Designed for public display. Robust and tamper-proof
- Battery power options on 7" and 10"
- Framed and open frame
- Interactive options on all models
- Can be customised for volume orders



Framed & open  
frame models



Battery power  
Option (7" & 10")



Push button(s)  
option



Motion sensor  
option



OEM available



better manufacturing  
China & Europe

www.adseries.com

Specifications are typical and subject to change.



## Accessories

7", 10.1" & 11.6"

### MAINS POWER & CABLING SOLUTIONS



DC12V 1/2A desk-type power adaptor, 1.5m DC lead, 1.5m DC power lead supplied as standard with mains powered models. 2.1mm right angle jack.

**DESK TYPE POWER LEADS**



Also available for all mains powered displays, 12V 1/2A wall type integrated power supply with 2.1mm right angle jack and 2m cable.

**WALL TYPE POWER LEADS**



1 & 2 metre DC extension power cables

**EXTENSION CABLES**



Run up to 3 connections from a single 12V power supply. Ideal cabling solutions for installations with lights, LEDs and other powered elements.

**SPLITTERS**



Can be mounted externally on POS structures providing an easily accessible mains on/off switch

**PANEL MOUNT POWER SWITCHES**

### BATTERIES



Batteries can be used with AD Series 7" & 10" displays (standard definition). AD Series Clever Play software delivers intelligent battery use and optimal power conservation.

Alkaline batteries available in 6D, 12D & 24D battery packs

**ALKALINE**

Built-to-order solutions including 5, 10 & 18 Ah batteries and charger units



**RECHARGEABLE**

### CONTENT & MEMORY



1, 2 & 4gb SD cards available for display with SD card memory

**SD CARDS**



HD displays have 4gb internal memory which can be upgraded for volume orders. Standard displays can be provided with internal memory for volume orders.

**MEMORY UPGRADES**

Content can be loaded by the customer or by AD Series before displays are delivered. We can load content at manufacture if manufacturing to order or pre-load on displays from stock for a small charge

**CONTENT  
PRE-LOAD**



Panel mount 1m USB extension cables for access to USB slot for content updates, ideal for displays built into POS structures

**USB CABLES**

### MOUNTS & FIXINGS



**SEULM02** Magnetic shelf-edge mount in powder coat steel. Clamp for additional security if required. Extremely quick and easy to deploy, no drilling or alteration to shelves required.

**MAGNETIC**



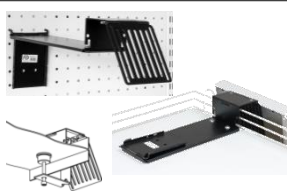
**SEULM05** Extendible peg wall mount in powder coat steel. Locks in to peg walls simply and effectively. quick and easy to deploy, fits all standard peg walls.

**PEG WALL**



**SEULM050-FSC** Multi-function mount combining peg wall fixing with floor stand conversion kit. Ideal for moving promotions from floor to peg wall or vice versa Powder coat steel.

**FLOOR COMBI**



**SEULM07-VO** Multi-function mount combining magnetic and clamp shelf fixing plus peg wall fixing. Powder coat steel. Provides highly cost effective, flexible mounting solutions for a range of environments.

**SHELF COMBI**

### POS EXTRAS



Branding and badging available for volume orders in silkscreen, metal, plastic & more

**BADGES & LOGOS**

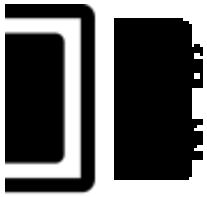


LED strips can add real impact to a POS housing. We can ship lighting with displays and provide intelligent cable & power management solutions

**LED STRIPS**

*This page provides a summary of some of our standard display solutions, but we regularly provide custom mounting, power, cabling and lighting solutions to support our customers. Please talk to us about your requirements.*

**CUSTOM SOLUTIONS**



## Commercial grade displays

### 7", 10.1" & 11.6"

| SPECIFICATIONS      |  |          |           |
|---------------------|--|----------|-----------|
| Frame types         | A range of commercial grade open frame and framed casings in metal and plastic. Open frame casings have been designed to offer maximum flexibility for mounting and cable management. Frames have been designed for a slim profile and sleek modern designs that are highly resistant to dust and easy to clean. |          |           |
| Battery Power       | Battery power enables displays to be deployed where no mains power exists – key for opening up Retail shelf edge opportunities and for mobile POP/POS. Available across the range with AD Series Clever Play for intelligent power saving. Alkaline and rechargeable options.                                    |          |           |
| Interactive options | PIR motion sensor module & button modules available on all our open frame commercial grade displays on trailing leads (8cm for PIR, 50cm for buttons as standard). MOQ may apply. Custom option for framed displays. See also our Commercial Grade displays with touchscreen                                     |          |           |
| Operation           | Displays enable a range of options including continuous playback of content, simple interactivity via PIR and button(s). All displays support power-on autostart. Monitor models come with HDMI/VGA inputs.  |          |           |
| Content update      | USB update as standard. Panel mount 1m USB extension cables available  |          |           |
| Formats             | AVI, MPEG, JPEG, MP3   | Warranty | 18 months |

| SPECIFICATIONS                          |  |                                 |  |                            |
|---|--|---------------------------------|--|----------------------------|
| SCREEN SIZE                             | 7"   | 7"                              | 10.1"  | 11.6"                      |
| PRODUCT CODES<br>Open Frame:<br>Framed: | ADOF700M2A<br>AD700PSE   | ADOF700MH<br>AD700PH            | ADOF101MH<br>AD101PH   | ADOF116MH<br>AD116PH       |
| Resolution                              | 480 x 234  | 1024 x 600<br>1080p HD decoding | 1280 x 800<br>1080p HD decoding  | 1920 x 1080<br>Full HD     |
| Display type                            | Displayer  | Displayer                       | Displayer  | Displayer                  |
| Power                                   | 12V DC & battery   | 12V DC                          | 12V DC   | 12V DC                     |
| Interactivity                           | Open frame models support PIR on 8cm trailing lead and push buttons on 50cm trailing leads as standard. Ask for details on framed models |                                 |  |                            |
| Inputs                                  | SD, USB  |                                 | HDMI in, SD, USB (Please note, current 10" stock models may not have HDMI) |                            |
| Buttons supported                       | 4  | 3                               | 3  | 3                          |
| Memory                                  | SD card, USB   | 4gb internal, SD card, USB      | 4gb internal, SD card, USB   | 4gb internal, SD card, USB |
| Aspect Ratio                            | 16:9   | 17:10                           | 16:10  | 16:9                       |
| Brightness (nits)                       | 250  | 350-400                         | 350-400  | 350                        |
| Contrast Ratio                          | 300:1  | 800:1                           | 800:1  | 700:1                      |
| Viewing Angle                           | 120 x 95   | 160+ x 160+                     | 160+ x 160+  | 178 x 178                  |
| Casing & mounting                       | Metal open frame; Plastic framed. Vesa plus other fixings for open frame models  |                                 |  |                            |
| Speakers & volume                       | 2 x 2w. Volume control on unit   |                                 |  |                            |
| Remote Control                          | Optional   |                                 |  |                            |
| Dimensions mm<br>Open Frame:<br>Framed: | 192x141x23.9<br>203x149x28.5   | Custom - MOQ<br>Custom - MOQ    | 230x165x28<br>239x174x32   | 272x161x26<br>281x179x32   |
| Weight<br>Open Frame:<br>Framed:        |  |                                 |  |                            |
| Certifications:                         | Appropriate for territory of deployment  |                                 |  |                            |

Specifications are typical and subject to change.

### OVERVIEW

Comprehensive range of framed and open frame commercial grade displayers and monitors. Available with buttons and PIR. Battery power option for 7" & 10". All our displays have proven exceptional levels of reliability.

See also our Touchscreen range.

### MARKETS

Thousands of AD Series displays are deployed all over the world In Retail, Kiosk, Vending, Education, Commercial and Industrial environments.

### KEY FEATURES

- Designed for public display. Robust and tamper-proof
- Battery power options on 7" and 10"
- Framed and open frame
- Interactive options on all models
- Can be customised for volume orders



Framed & open frame models



Battery power Option (7" & 10")



Push button(s) option



Motion sensor option



OEM available



better manufacturing  
China & Europe

www.adseries.com



## Commercial grade displays

7", 10.1" & 11.6"

### TECHNICAL DRAWINGS INDEX – COMMERCIAL GRADE 7", 10.1", 11.6" OPEN FRAME

| Screen Size | Resolution  | Product codes | Page number                    |
|-------------|-------------|---------------|--------------------------------|
| 7"          | Standard    | ADOF700M2A    | <a href="#">4</a>              |
|             | HD decoding | ADOF700MH     | Custom product,<br>MOQ applies |
| 10.1"       | Standard    | ADOF101M2     | Custom product,<br>MOQ applies |
|             | HD decoding | ADOF101MH     | <a href="#">5</a>              |
| 11.6"       | Full HD     | ADOF116MH     | <a href="#">6</a>              |

### TECHNICAL DRAWINGS INDEX – COMMERCIAL GRADE 7", 10.1", 11.6" FRAMED

| Screen Size | Resolution  | Product codes | Page number                    |
|-------------|-------------|---------------|--------------------------------|
| 7"          | Standard    | AD700PSE      | <a href="#">7</a>              |
|             | HD decoding | AD700PH       | Custom product,<br>MOQ applies |
| 10.1"       | HD decoding | AD101PH       | <a href="#">8</a>              |
| 11.6"       | Full HD     | AD116PH       | <a href="#">9</a>              |

Specifications are typical and subject to change.

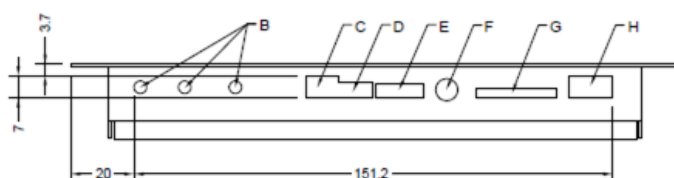


# Commercial grade displays

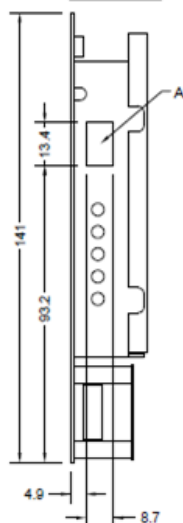
7", 10.1" & 11.6"

## 7" OPEN FRAME STANDARD DEFINITION ADOF700M2A; ADOF700M2A-PIR

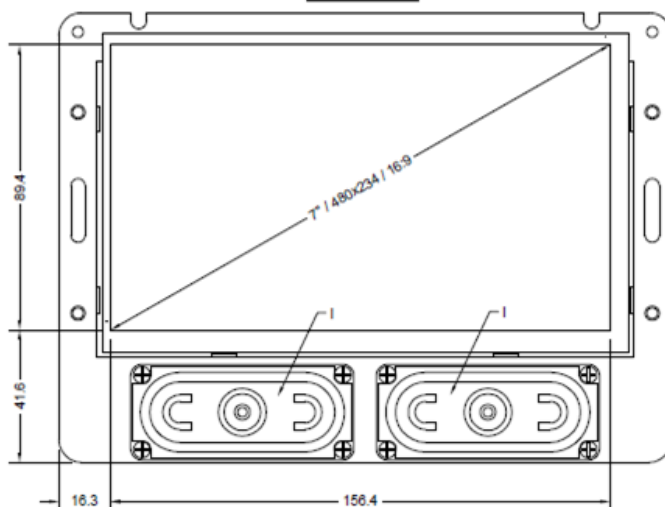
TOP VIEW



SIDE VIEW



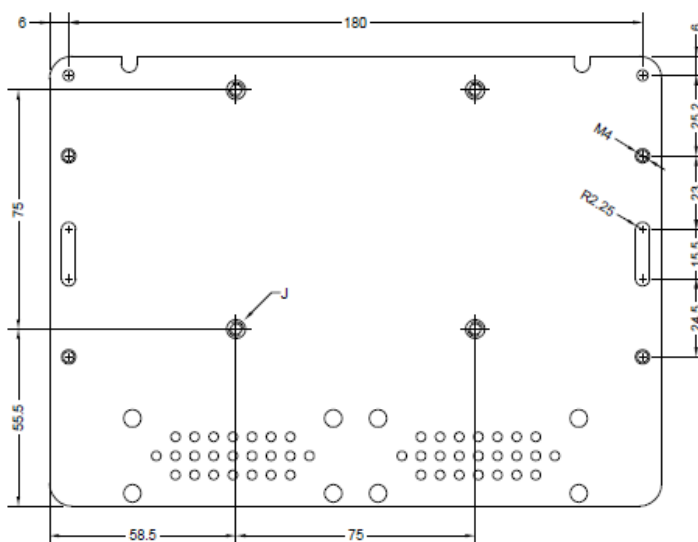
FRONT VIEW



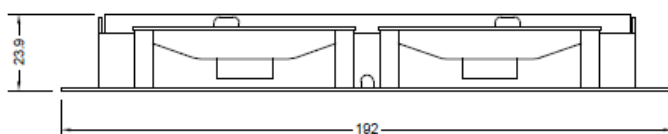
SIDE VIEW



REAR VIEW



BOTTOM VIEW



### NOTES:-

- A - POWER SWITCH
- B - OSD CONTROL BUTTONS x3
- C - POWER SUPPLY SOCKET
- D - FLASHING PUSH BUTTON SUPPORT
- E - VOLUME CONTROL
- F - 3.5mm AUDIO OUT SOCKET
- G - SD CARD SOCKET
- H - USB SOCKET
- I - SPEAKER x2
- J - M4 VESA MOUNTING POINT x4

AD SERIES DISPLAYS MANUFACTURING LTD  
UNIT 49,  
ELDON WAY INDUSTRIAL ESTATE,  
PADDOCK WOOD, TONBRIDGE,  
KENT, TN12 8BE  
TEL - 0870 0055 520  
www.adseries.com

PRODUCT CODE

ADOF700M2A

PRODUCT NAME

7" Open Frame Clever Play Displayer

PRODUCT DESCRIPTION

PIR / INTEGRATED AUDIO / MAINS OR BATTERY  
OPERATION/ SUPPORTS 4x BUTTONS

DRAWING NUMBER

AD0042-01

DRAWN BY

RP

APPROVED BY

TBA

DATE

18/05/2015

REV

SCALE

NTS

SHEET NO.

1 OF 1

ALL DIMENSIONS SHOWN IN  
MILLIMETERS - UNLESS STATED  
OTHERWISE

THIRD  
ANGLE  
PROJECTION



THIS DRAWING IS THE PROPERTY OF 'AD SERIES DISPLAYS MANUFACTURING' AND  
CONTAINS CONFIDENTIAL AND COPYRIGHT MATERIAL.

NO PART OF THIS DRAWING MAY BE REPRODUCED OR TRANSMITTED IN ANY FORM  
OR BY ANY MEANS, ELECTRONIC OR MECHANICAL, FOR ANY PURPOSE, WITHOUT  
THE EXPRESS WRITTEN PERMISSION OF 'AD SERIES DISPLAYS MANUFACTURING'.  
DRAWINGS AND DIMENSIONS ARE SUBJECT TO CHANGE WITHOUT PRIOR NOTICE  
OR NOTIFICATION.

© 2015 AD SERIES DISPLAYS MANUFACTURING. ALL RIGHTS RESERVED

Specifications are typical and subject to change.

+44 870 005 5520 (UK)  
+852 8199 0550 (HK)

shelfedge@adseries.com

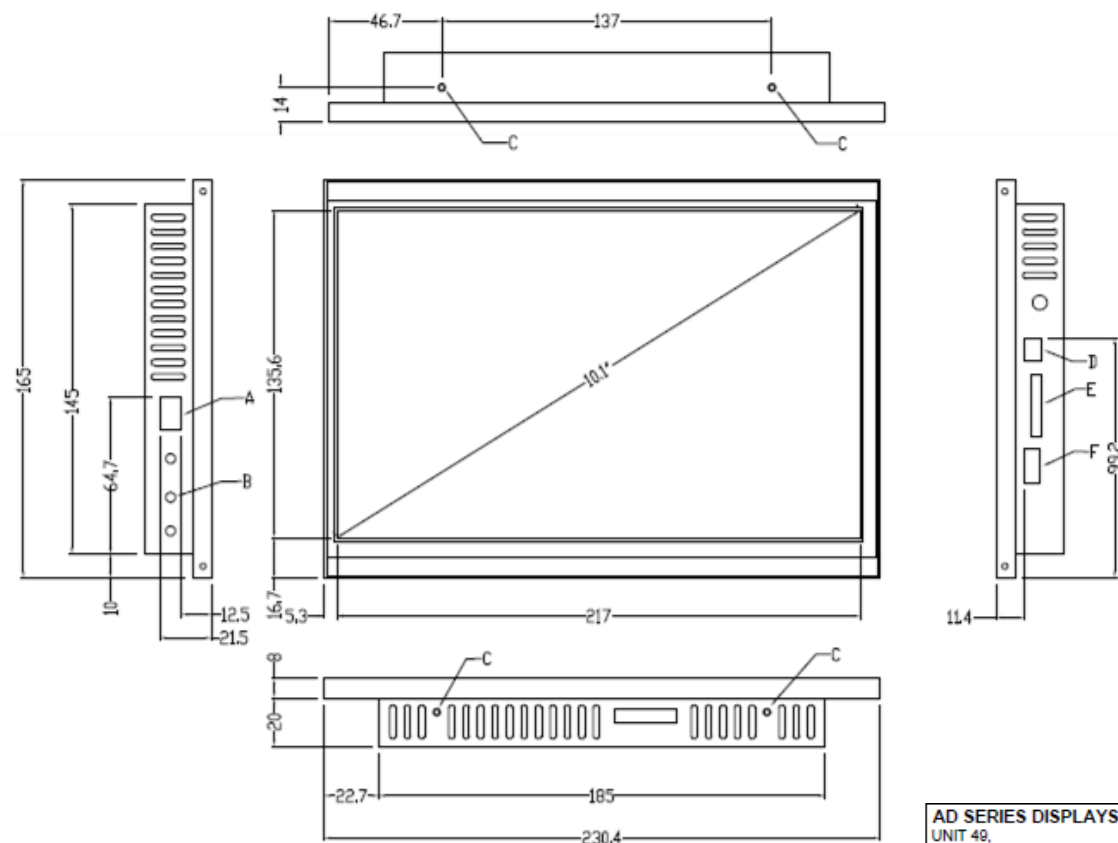
**AD SERIES**  
better manufacturing  
China & Europe  
www.adseries.com



## Commercial grade displays

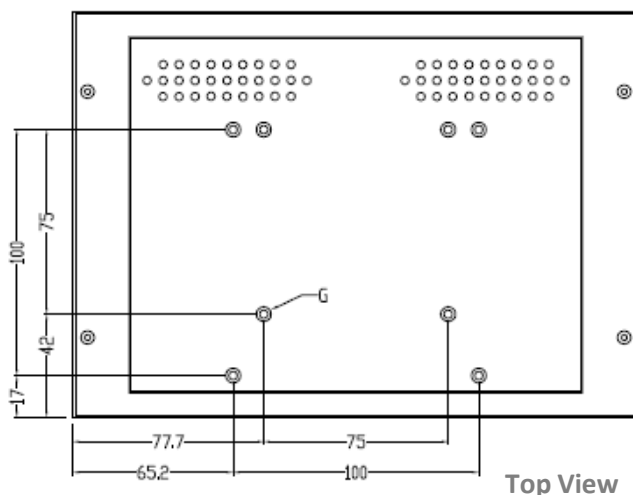
7", 10.1" & 11.6"

### 10.1" OPEN FRAME HIGHER DEFINITION ADOF101MH, ADOF101MH-PIR



#### NOTES:-

- A - POWER SWITCH
- B - CONTROL BUTTONS x3
- C - M3 MOUNTING POINTS x4
- D - POWER SUPPLY SOCKET
- E - SD CARD SOCKET
- F - USB SOCKET
- G - M4 VESA MOUNTING POINTS x8



Top View

|  |                          |                            |
|--|--------------------------|----------------------------|
| <b>AD SERIES DISPLAYS MANUFACTURING LTD</b><br>UNIT 49,<br>ELTON WAY INDUSTRIAL ESTATE,<br>PADDOCK WOOD, TONBRIDGE,<br>KENT, TN12 6BE<br>TEL - 0870 0055 520<br>www.adseries.com   |                          |                            |
| <b>PRODUCT CODE</b><br>ADOF101MH   |                          |                            |
| <b>PRODUCT NAME</b><br>10.1" OPEN FRAMED HD PLAYER   |                          |                            |
| <b>PRODUCT DESCRIPTION</b><br>1200x800, 350 NIT, 1080p   |                          |                            |
| <b>DRAWING NUMBER</b><br>AD0028-01   |                          |                            |
| <b>DRAWN BY</b><br>RP  | <b>APPROVED BY</b><br>MB | <b>DATE</b><br>17/03/2015  |
| <b>REV</b><br>B  | <b>SCALE</b><br>NTS      | <b>SHEET NO.</b><br>1 OF 1 |
| ALL DIMENSIONS SHOWN IN MILLIMETERS - UNLESS STATED OTHERWISE  |                          | THIRD ANGLE PROJECTION     |
| THIS DRAWING IS THE PROPERTY OF 'AD SERIES DISPLAYS MANUFACTURING' AND CONTAINS CONFIDENTIAL AND COPYRIGHT MATERIAL.<br>NO PART OF THIS DRAWING MAY BE REPRODUCED OR TRANSMITTED IN ANY FORM OR BY ANY MEANS, ELECTRONIC OR MECHANICAL, FOR ANY PURPOSE, WITHOUT THE EXPRESS WRITTEN PERMISSION OF 'AD SERIES DISPLAYS MANUFACTURING'.<br>© 2015 AD SERIES DISPLAYS MANUFACTURING. ALL RIGHTS RESERVED |                          |                            |

Specifications are typical and subject to change.

+44 870 005 5520 (UK)  
+852 8199 0550 (HK)

shelfedge@adseries.com



better manufacturing  
China & Europe  
www.adseries.com

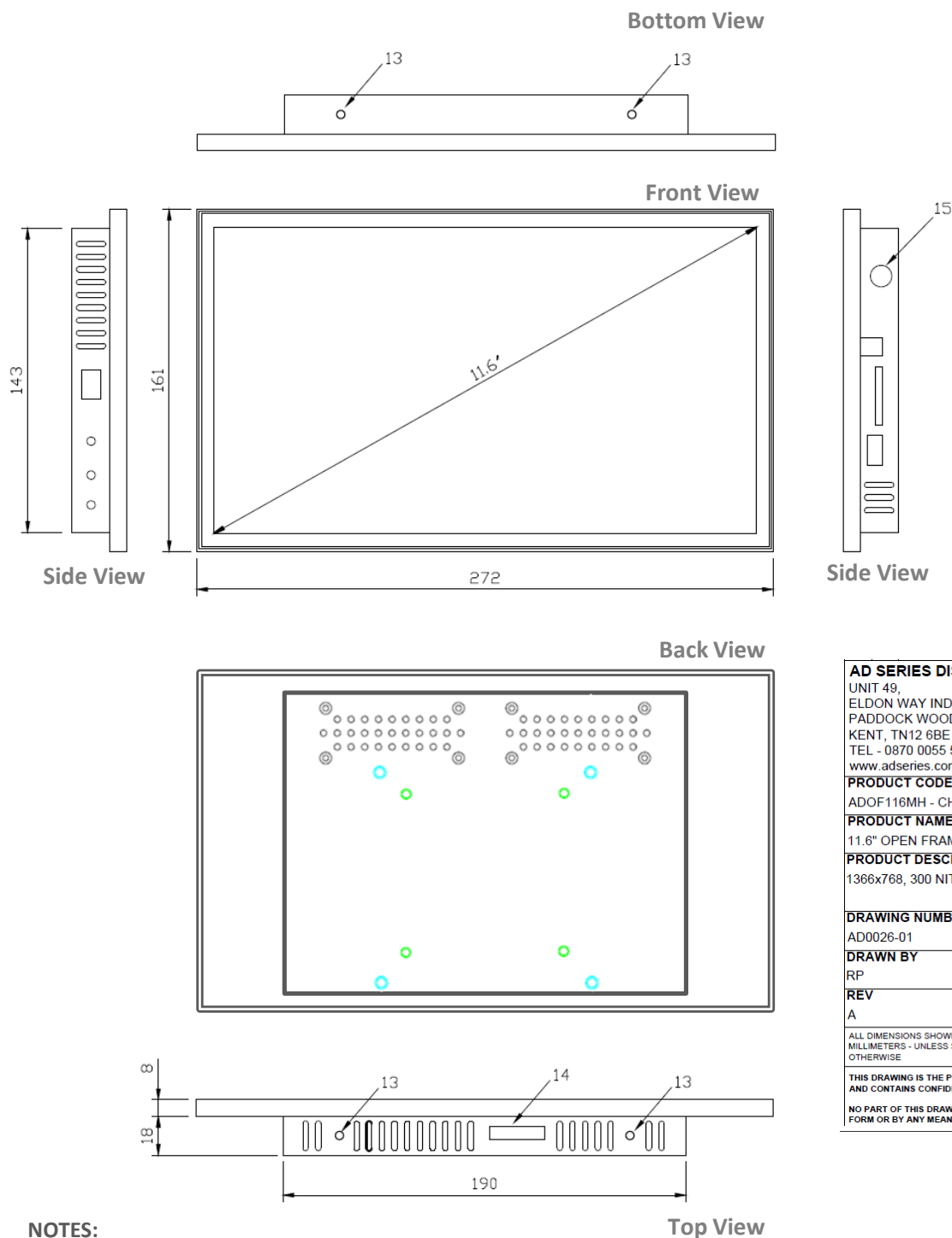




# Commercial grade displays

7", 10.1" & 11.6"

## 11.6" OPEN FRAME HD ADOF116MH; ADOF116MH-PIR



### NOTES:

100mm VESA

75mm VESA

Specifications are typical and subject to change.

|   |                    |                              |
|---|--------------------|------------------------------|
| <b>AD SERIES DISPLAYS MANUFACTURING LTD</b>   |                    |                              |
| UNIT 49,<br>ELDON WAY INDUSTRIAL ESTATE,<br>PADDOCK WOOD, TONBRIDGE,<br>KENT, TN12 6BE<br>TEL - 0870 0055 520<br>www.adseries.com   |                    |                              |
| <b>PRODUCT CODE</b>   |                    |                              |
| ADOF116MH - CHIMEI  |                    |                              |
| <b>PRODUCT NAME</b>   |                    |                              |
| 11.6" OPEN FRAMED HD PLAYER   |                    |                              |
| <b>PRODUCT DESCRIPTION</b>  |                    |                              |
| 1366x768, 300 NIT, 1080p  |                    |                              |
| <b>DRAWING NUMBER</b>   |                    |                              |
| AD0026-01   |                    |                              |
| <b>DRAWN BY</b>   | <b>APPROVED BY</b> | <b>DATE</b>                  |
| RP  | MB                 | 11.03.2015                   |
| <b>REV</b>  | <b>SCALE</b>       | <b>SHEET NO.</b>             |
| A   | NTS                | 1 OF 1                       |
| ALL DIMENSIONS SHOWN IN<br>MILLIMETERS - UNLESS STATED<br>OTHERWISE   |                    | THIRD<br>ANGLE<br>PROJECTION |
| THIS DRAWING IS THE PROPERTY OF 'AD SERIES DISPLAYS MANUFACTURING'<br>AND CONTAINS CONFIDENTIAL AND COPYRIGHT MATERIAL.             |                    |                              |
| NO PART OF THIS DRAWING MAY BE REPRODUCED OR TRANSMITTED IN ANY<br>FORM OR BY ANY MEANS, ELECTRONIC OR MECHANICAL, FOR ANY PURPOSE, |                    |                              |



# Commercial grade displays

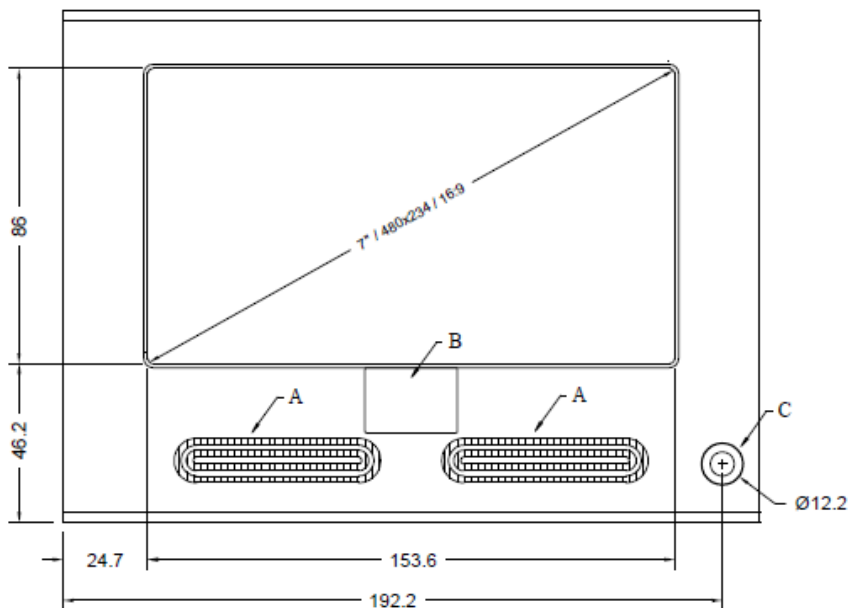
7", 10.1" & 11.6"

## 7" FRAMED STANDARD DEFINITION AD700PSE; AD700PSE-PIR

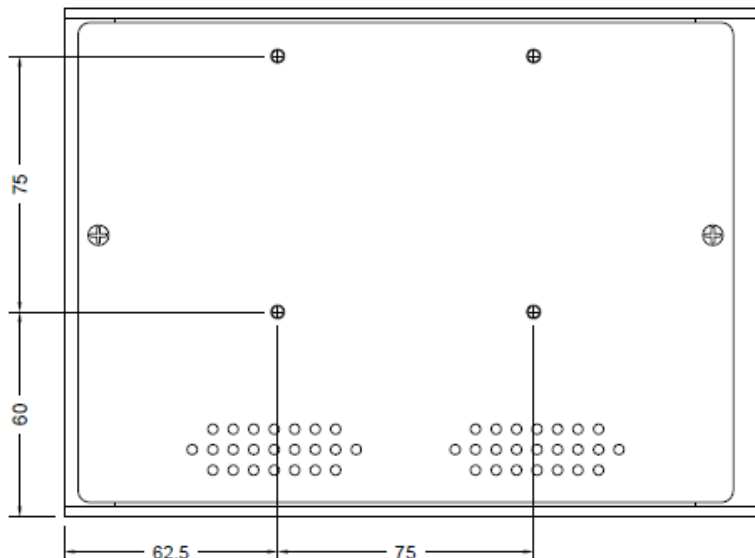
TOP VIEW



FRONT VIEW



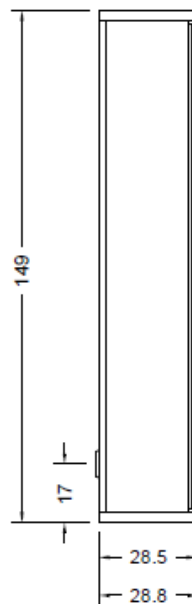
REAR VIEW



**NOTES:-**

- A - SPEAKER GRILL
- B - BRAND OR COMPANY LOGO POSITION
- C - PIR SENSOR

SIDE VIEW



|   |                    |                              |
|---|--------------------|------------------------------|
| AD SERIES DISPLAYS MANUFACTURING LTD<br>UNIT 49,<br>ELDON WAY INDUSTRIAL ESTATE,<br>PADDOCK WOOD, TONBRIDGE,<br>KENT, TN12 6BE<br>TEL - 0870 0055 520<br>www.adseries.com   |                    |                              |
| PRODUCT CODE<br>AD700PSE  |                    |                              |
| PRODUCT NAME<br>7" Clever Play Displayer  |                    |                              |
| PRODUCT DESCRIPTION<br>PIR / INTEGRATED AUDIO / MAINS OR BATTERY<br>OPERATION/ SUPPORTS 4x BUTTONS  |                    |                              |
| DRAWING NUMBER<br>AD0041-01   |                    |                              |
| DRAWN BY<br>RP  | APPROVED BY<br>TBA | DATE<br>18/05/2015           |
| REV<br>-  | SCALE<br>NTS       | SHEET NO.<br>1 OF 1          |
| ALL DIMENSIONS SHOWN IN<br>MILLIMETERS - UNLESS STATED<br>OTHERWISE   |                    | THIRD<br>ANGLE<br>PROJECTION |
| THIS DRAWING IS THE PROPERTY OF 'AD SERIES DISPLAYS MANUFACTURING' AND<br>CONTAINS CONFIDENTIAL AND COPYRIGHT MATERIAL.<br>NO PART OF THIS DRAWING MAY BE REPRODUCED OR TRANSMITTED IN ANY FORM<br>OR BY ANY MEANS, ELECTRONIC OR MECHANICAL, FOR ANY PURPOSE, WITHOUT<br>THE EXPRESS WRITTEN PERMISSION OF 'AD SERIES DISPLAYS MANUFACTURING'.<br>DRAWINGS AND DIMENSIONS ARE SUBJECT TO CHANGE WITHOUT PRIOR NOTICE<br>OR NOTIFICATION.<br>© 2015 AD SERIES DISPLAYS MANUFACTURING. ALL RIGHTS RESERVED |                    |                              |

Specifications are typical and subject to change.



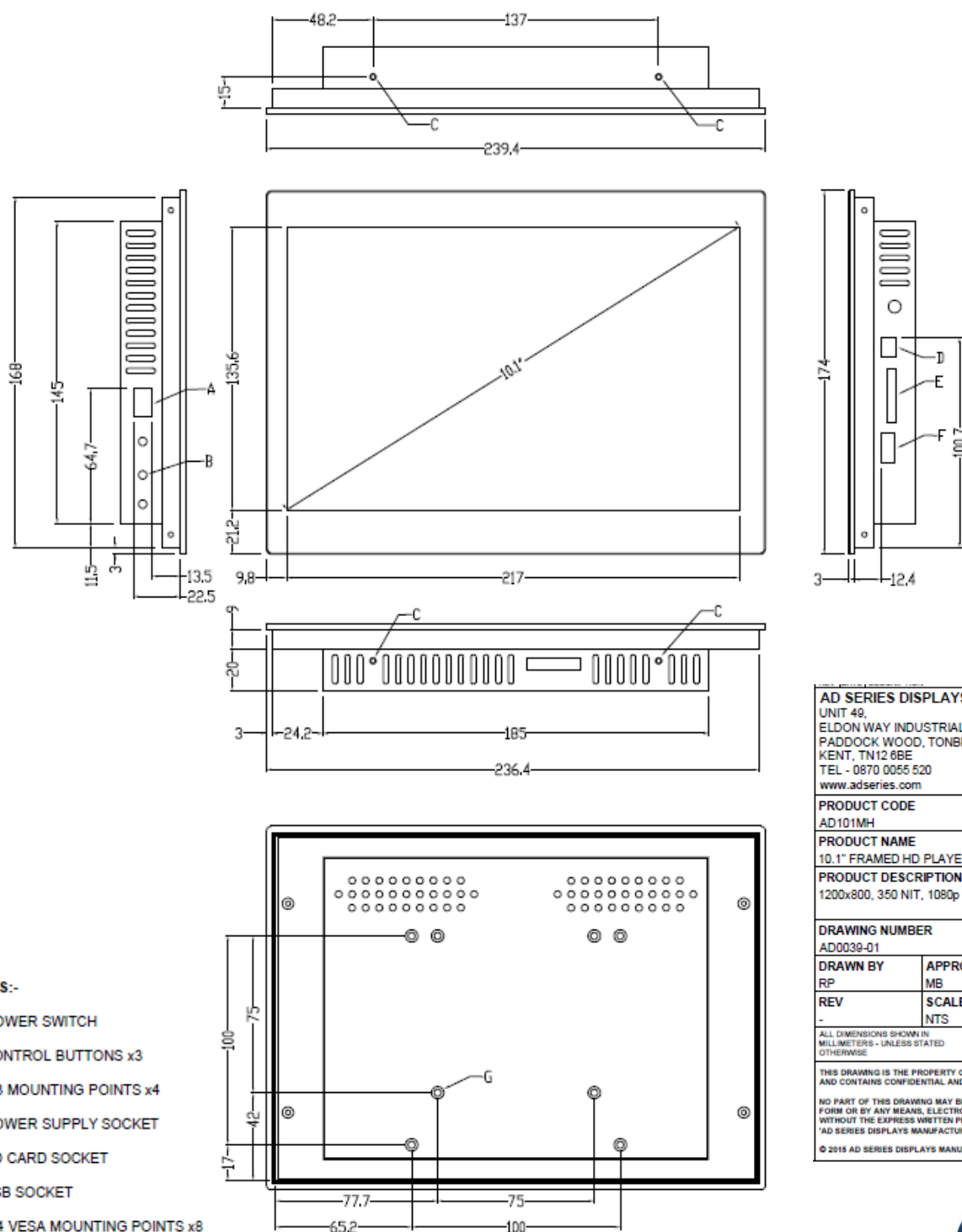


## Commercial grade displays

7", 10.1" & 11.6"

### 10.1" FRAMED HIGHER DEFINITION AD101PH

Models with PIR will vary slightly



AD SERIES DISPLAYS MANUFACTURING LTD  
UNIT 49,  
ELDON WAY INDUSTRIAL ESTATE,  
PADDOCK WOOD, TONBRIDGE,  
KENT, TN12 6BE  
TEL - 0870 0055 520  
www.adseries.com

PRODUCT CODE  
AD101MH

PRODUCT NAME  
10.1" FRAMED HD PLAYER

PRODUCT DESCRIPTION  
1200x800, 350 NIT, 1080p

DRAWING NUMBER  
AD0039-01

|                |                   |                    |
|----------------|-------------------|--------------------|
| DRAWN BY<br>RP | APPROVED BY<br>MB | DATE<br>29/04/2015 |
|----------------|-------------------|--------------------|

|          |              |                     |
|----------|--------------|---------------------|
| REV<br>- | SCALE<br>NTS | SHEET NO.<br>1 OF 1 |
|----------|--------------|---------------------|

ALL DIMENSIONS SHOWN IN  
MILLIMETERS - UNLESS STATED  
OTHERWISE

THIRD  
ANGLE  
PROJECTION

THIS DRAWING IS THE PROPERTY OF 'AD SERIES DISPLAYS MANUFACTURING' AND CONTAINS CONFIDENTIAL AND COPYRIGHT MATERIAL.

NO PART OF THIS DRAWING MAY BE REPRODUCED OR TRANSMITTED IN ANY FORM OR BY ANY MEANS, ELECTRONIC OR MECHANICAL, FOR ANY PURPOSE, WITHOUT THE EXPRESS WRITTEN PERMISSION OF 'AD SERIES DISPLAYS MANUFACTURING'.

© 2015 AD SERIES DISPLAYS MANUFACTURING. ALL RIGHTS RESERVED

Specifications are typical and subject to change.

+44 870 005 5520 (UK)  
+852 8199 0550 (HK)

shelfedge@adseries.com

**AD SERIES**  
better manufacturing  
China & Europe  
www.adseries.com

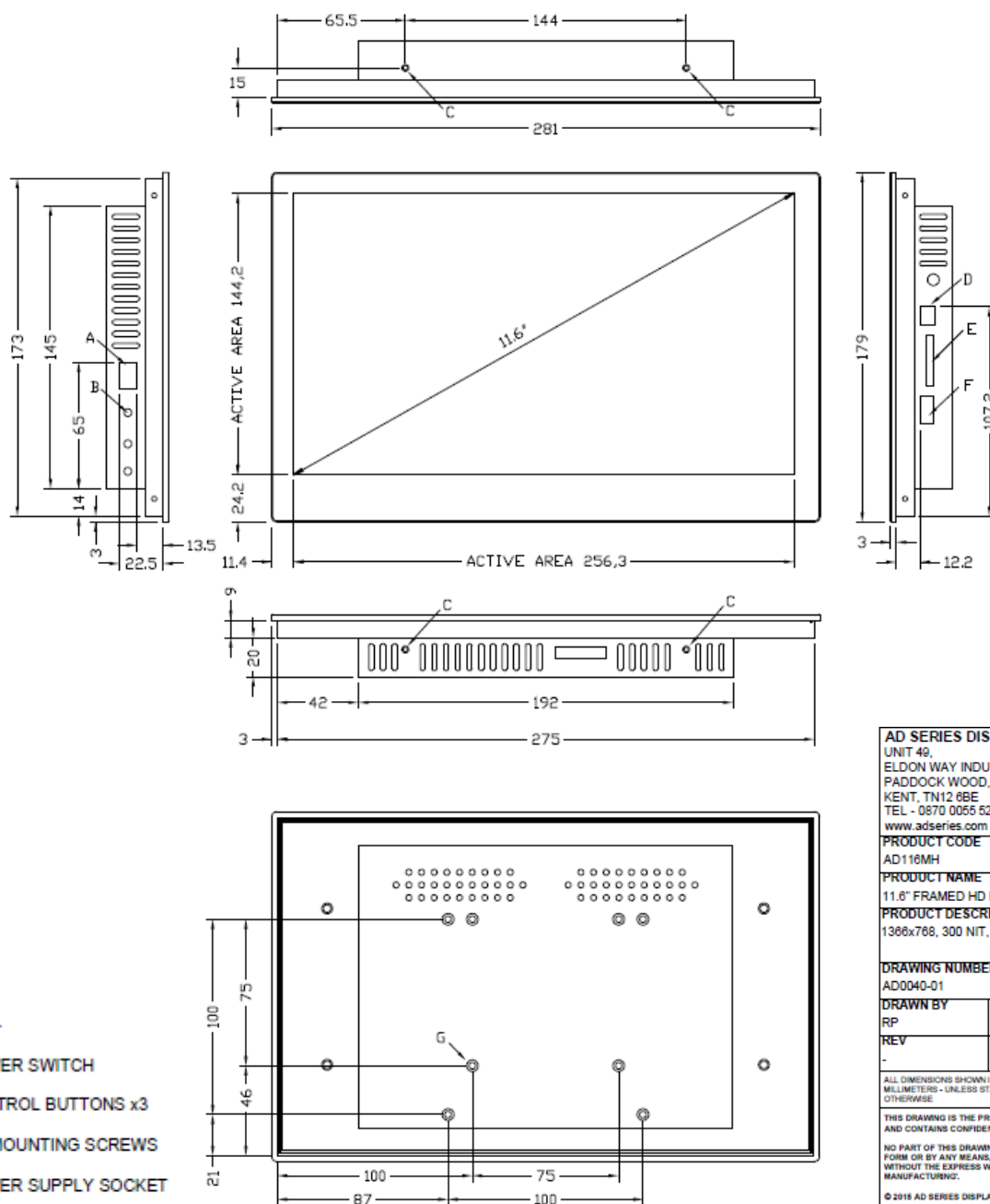


## Commercial grade displays

7", 10.1" & 11.6"

### 11.6" HIGH DEFINITION AD116PH

Models with PIR will vary slightly



#### NOTES:-

- A - POWER SWITCH
- B - CONTROL BUTTONS x3
- C - M3 MOUNTING SCREWS
- D - POWER SUPPLY SOCKET
- E - SD CARD SOCKET
- F - USB SOCKET
- G - M4 VESA MOUNTING POINTS x8

|  |                    |                        |
|--|--------------------|------------------------|
| <b>AD SERIES DISPLAYS MANUFACTURING LTD</b><br>UNIT 49,<br>ELDON WAY INDUSTRIAL ESTATE,<br>PADDOCK WOOD, TONBRIDGE,<br>KENT, TN12 6BE<br>TEL - 0870 0055 520<br>www.adseries.com                               |                    |                        |
| <b>PRODUCT CODE</b>  |                    |                        |
| AD116MH  |                    |                        |
| <b>PRODUCT NAME</b>  |                    |                        |
| 11.6" FRAMED HD PLAYER   |                    |                        |
| <b>PRODUCT DESCRIPTION</b>   |                    |                        |
| 1366x768, 300 NIT, 1080p   |                    |                        |
| <b>DRAWING NUMBER</b>  |                    |                        |
| AD0040-01  |                    |                        |
| <b>DRAWN BY</b>  | <b>APPROVED BY</b> | <b>DATE</b>            |
| RP   | MB                 | 29.04.2015             |
| <b>REV</b>   | <b>SCALE</b>       | <b>SHEET NO.</b>       |
| -  | NTS                | 1 OF 1                 |
| ALL DIMENSIONS SHOWN IN MILLIMETERS - UNLESS STATED OTHERWISE  |                    | THIRD ANGLE PROJECTION |
| THIS DRAWING IS THE PROPERTY OF 'AD SERIES DISPLAYS MANUFACTURING' AND CONTAINS CONFIDENTIAL AND COPYRIGHT MATERIAL.   |                    |                        |
| NO PART OF THIS DRAWING MAY BE REPRODUCED OR TRANSMITTED IN ANY FORM OR BY ANY MEANS, ELECTRONIC OR MECHANICAL, FOR ANY PURPOSE, WITHOUT THE EXPRESS WRITTEN PERMISSION OF 'AD SERIES DISPLAYS MANUFACTURING'. |                    |                        |
| © 2015 AD SERIES DISPLAYS MANUFACTURING. ALL RIGHTS RESERVED   |                    |                        |

Specifications are typical and subject to change.



better manufacturing  
China & Europe

www.adseries.com